



## m/v SEMINOLE

### GENERAL

IMO Number	:	8890396
Flag	:	Liberia
Port of registry	:	Monrovia
Keel Laying	:	19/04/1993
Date of Built	:	12/11/1995
Classification	:	Bureau Veritas, No. 35292N
Class Notation	:	I <sup>RS</sup> HULL <sup>RS</sup> MACH, General cargo ship, Coastal area (R2-RSN as per RMRS), ICE (ICE 1 as per RMRS)
Type of Ship	:	General Cargo Ship
Basic functions	:	Transport of general cargoes, grain, forest products, dangerous cargoes and other bulk cargoes etc.

### DIMENSIONS

Length o.a.	:	139,20	m
Length b.p.	:	135,60	m
Breadth	:	16,50	m
Depth to Main Deck	:	5,50	m
Summer draft	:	3,77	m
DWT	:	5107	t
GT	:	4976	
NRT	:	2310	

### CARGO HOLD CAPACITIES

No.1 Hold	:	2.156	m <sup>3</sup>
No.2 Hold	:	2.190	m <sup>3</sup>
No.3 Hold	:	2.848	m <sup>3</sup>
No.4 Hold	:	2.162	m <sup>3</sup>
Total Cargo Volume (330.404 ft <sup>3</sup> )	:	9.356	m <sup>3</sup>
Cargo Hold Tank Top Strength	:	5,50	t/m <sup>2</sup>

### CARGO HATCH SIZES

No.1 Hatch	:	22.80 x 12,63 m
No.2 Hatch	:	22.20 x 12,63 m
No.3 Hatch	:	27.60 x 12,63 m
No.4 Hatch	:	22.20 x 12,63 m

### PROPULSION

Main Engine	:	2x 6CHRN36/45, 883kW @ 350RPM
Propellers	:	2x FPP, 4 bladed, Dia.1800mm, Stainless Steel
Rudder	:	2x Steerable Nozzle
Bow Thruster	:	1x 95kW FPP

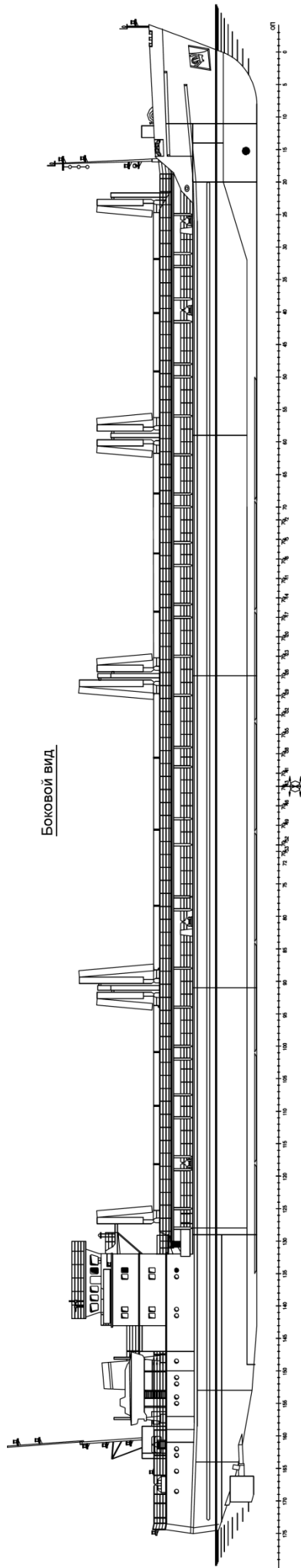
### GENERATORS

Diesel Generators	:	2x Cummins QSB7-DM - 150 kWe (380V 50Hz)
Emergency Generator	:	1x 6 CHN 12/14 - 50 kWe
Harbor Generator	:	1x 6 CHN 12/14 - 50 kWe

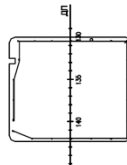
### PERFORMANCE

Total Power	:	1766 kW
Speed	:	10 kn

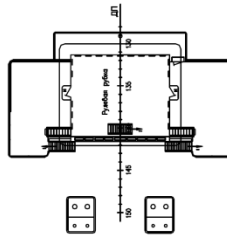
# Общее расположение General plan



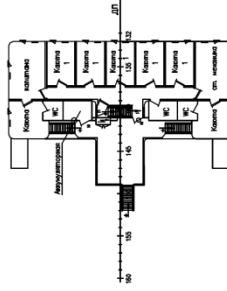
Крыша рулевой рубки



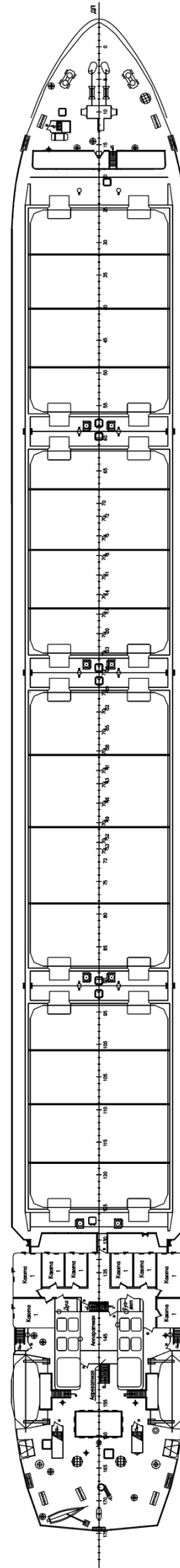
Ходовой мостик



Нижний мостик



Шлюпочная палуба



Мостики трюмов

Палуба бака